



Represented by  
**AUDREY GILLES**



**URBAN HABITAT-CREATE**

**FOR ORDERS, STYLE UPDATES, OR QUESTIONS CONTACT:**

[audrey@urbanhabitat510.com](mailto:audrey@urbanhabitat510.com)

[www.urbanhabitat510.com](http://www.urbanhabitat510.com)

415.819.7924

**EACH GARMENT IS ONE-OF-A-KIND AND HANDMADE.  
CHOOSE STYLE, PATTERN, FIBER, COLOR & SIZE.**



**TRIANGULAR  
PONCHO**  
shown in brushed mohair,  
small



**WRAP SHAWL**  
shown in  
alpaca tweed,  
oversized



**HOODED  
COAT-STYLE TUNIC**  
shown in alpaca,  
extra long



**HOODED  
SQUARE PONCHO**  
shown in alpaca,  
oversized



**OBLONG COWL NECK  
PONCHO**  
shown in alpaca tweed,  
large



**REVERSIBLE  
TRIANGULAR PONCHO**  
shown in alpaca,  
large



**TRIANGULAR BACK  
RUANA**  
shown in mohair,  
oversized



**TRIANGULAR PONCHO**  
shown in extra thick  
wool/alpaca blend, extra  
long fringe,  
small



**TRIANGULAR BACK  
RUANA**  
shown in alpaca,  
large



**DAVID OORBECK**  
shown in wrap shawl,  
oversized

**ONE**  
alpaca tweed

### **STYLES & SIZES**

In addition to the styles shown here and on the next page, we also create items such as shrugs, capes, and dresses. All orders can be made in custom sizes and lengths. Let us know if you do not see what you are looking for.

### **ABOUT THE ARTIST**

For more than a decade, David Oorbeck has been creating distinctive artisanal fashions from high-quality luxury fibers. He is a self-taught weaver, spinner, and dyer who started his own label: dro handwoven.

For truly singular garments with an incredibly individual character, David hand-spins and hand-dyes his own yarn. He weaves one-of-a-kind wearable works of art by hand in Oakland, California using natural fibers including alpaca, mohair, silk, cashmere, angora, and wool.

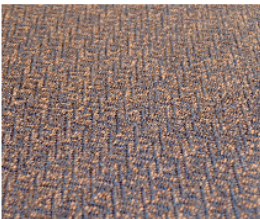




**HAND-KNOTTED  
SURI ALPACA FLEECE**



**1950s NORWEGIAN  
DIAMOND PATTERN**



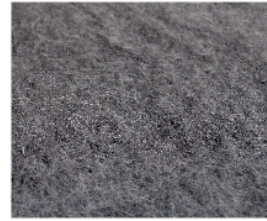
**1903 AUSTRIAN LARGE  
TWO-TONE-X PATTERN**



**1940s ITALIAN  
HERRINGBONE  
UNDULATING TWILL  
PATTERN**



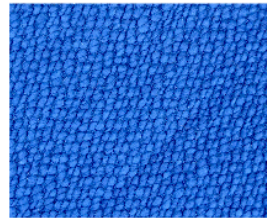
**BLANKET PONCHO**  
shown in wool/alpaca blend,  
oversized.



**BRUSHED MOHAIR**



**1950s NORWEGIAN  
SQUARE QUILT PATTERN**



**HANDSPUN, HAND-DYED  
BROKEN-TWILL PATTERN**



**1940s FINNISH  
TEXTURED-STRIPE  
PATTERN**

## **PATTERNS**

Each pattern is developed by researching rare and archival vintage patterns, some dating back to the eighteenth century.

## **CUSTOM ORDERS**

Allow 2-3 weeks for completion of custom orders or 4-6 weeks for larger sized items. Add 2-3 more weeks if the yarn is not in stock, or if order includes hand-spun/hand-dyed yarn.

## FIBERS

Available in superfine alpaca (natural, tweed, and dyed colors), alpaca wool blend (50%/50%), brushed mohair (75% mohair, 15% wool, and 10% nylon to hold the fiber blend together), cashmere (100%), French angora (100%), silk (100%), or hand-spun blends. Alpaca and alpaca tweed are naturally hypoallergenic, lanolin and dander free, water and fire resistant, and won't run if washed with water. All other fibers are commercially dyed and can bleed when washed.

## COLORS

The following colors are usually available including black and white (not shown). Custom, hand-dyed colors made from high-quality natural plant dyes are available upon request.

### SUPERFINE ALPACA (natural colors, not dyed)



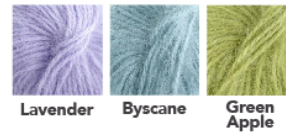
### SUPERFINE CASHMERE



### ALPACA TWEED (natural colors, not dyed)



### FRENCH ANGORA



### ALPACA/PERUVIAN WOOL BLEND



### BRUSHED MOHAIR



### SILK



## PRODUCT CARE

Hand wash in cool water with a soap engineered for delicate items and dry flat, or dry clean. Do not machine wash.

## RETURNS

We have never had a return. However, if you are not satisfied with your order, a dro handwoven credit or exchange will be issued when item is returned within 7 days. The product must be in its original condition, unused, and in its original packaging.